



LOW PRESSURE DIAPHRAGM PUMPS



MC 18

2 Diaphragm



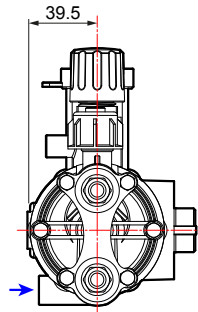
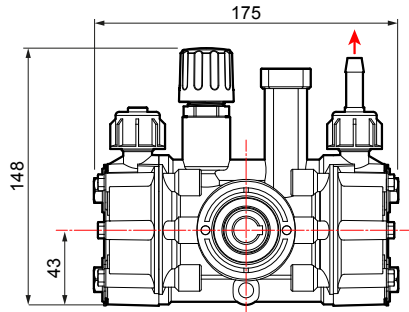
Suction



Delivery



By-pass



AVAILABLE MODELS

MC 18 G

3/4" Hollow Shaft Gearbox
Adjustable Regulator
3/8" Outlet, 1/2" Bypass

MC 18 E

5/8" Solid Keyed Shaft
Adjustable Regulator
3/8" Outlet, 1/2" Bypass



ACCESSORIES & REPAIR KITS

Comet Oil



8102.1801.00

Rebuild Kits



NBR: 5026.0319.00
Desmopan: 5026.0337.00

Motor / Engine	Pompa / Pump		0 bar - 0 p.s.i.				5 bar - 72 p.s.i.				10 bar - 145 p.s.i.				15 bar - 217 p.s.i.				kg lb	
Type	RPM	RPM	l/min	U.S.g.p.m.	HP	KW	l/min	U.S.g.p.m.	HP	KW	l/min	U.S.g.p.m.	HP	KW	l/min	U.S.g.p.m.	HP	KW		
4-stroke	3600	1100	9.0	2.39	0.10	0.07	8.9	2.34	0.17	0.13	8.4	2.22	0.30	0.22	8.1	2.14	0.40	0.29		
2-stroke	1450	1450	11.9	3.15	0.13	0.10	12.0	3.08	0.23	0.17	11.0	2.92	0.38	0.28	11.0	2.82	0.52	0.38	1.6	3.5
MEC71	1450																			
Nema 56C	1750	1750	11.7	3.10	0.13	0.10	11.3	2.99	0.23	0.17	10.9	2.88	0.38	0.28	10.5	2.77	0.52	0.38		