

**IF IN DOUBT ASK**  
3RD ANGLE PROJECTION

INSPECTION PROCEDURE	ISS	1	2	3	4	5	6
DATE 19.11.92	15.02.93	08.09.93	23.11.93	02.11.93	02/02/96		
C/N	5491	JDL	6006	JD	6611	JDL	CHES
MATERIAL							MD
FINISH							
TOLERANCE UNLESS STATED	+/- 0.5						
DIMENSIONS IN mm.							

**Ebac Limited**

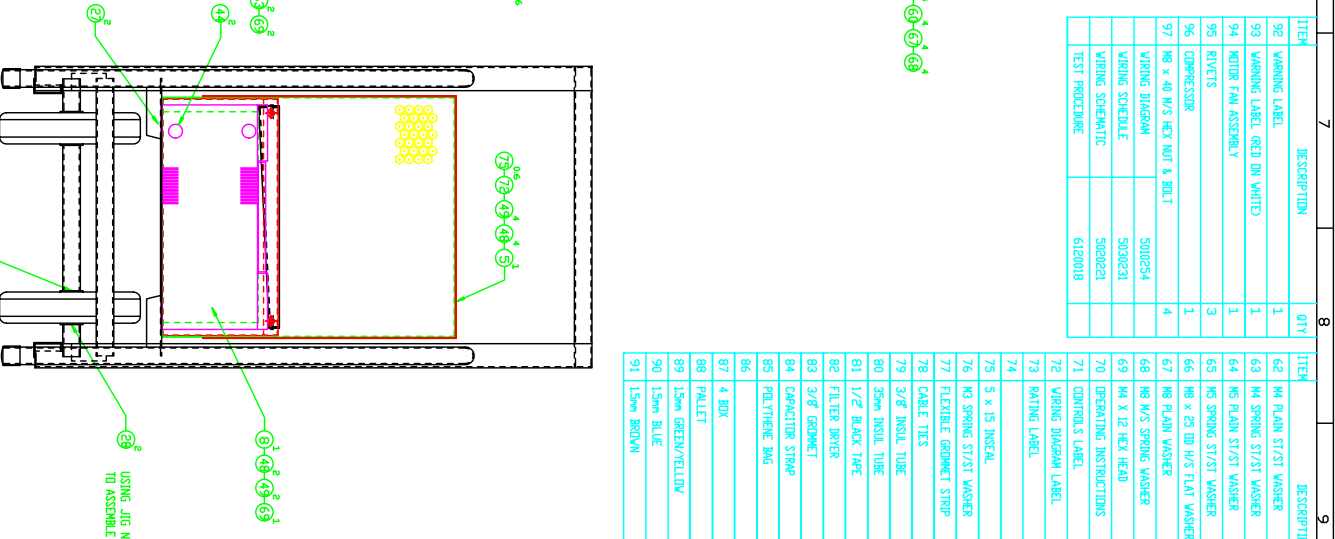
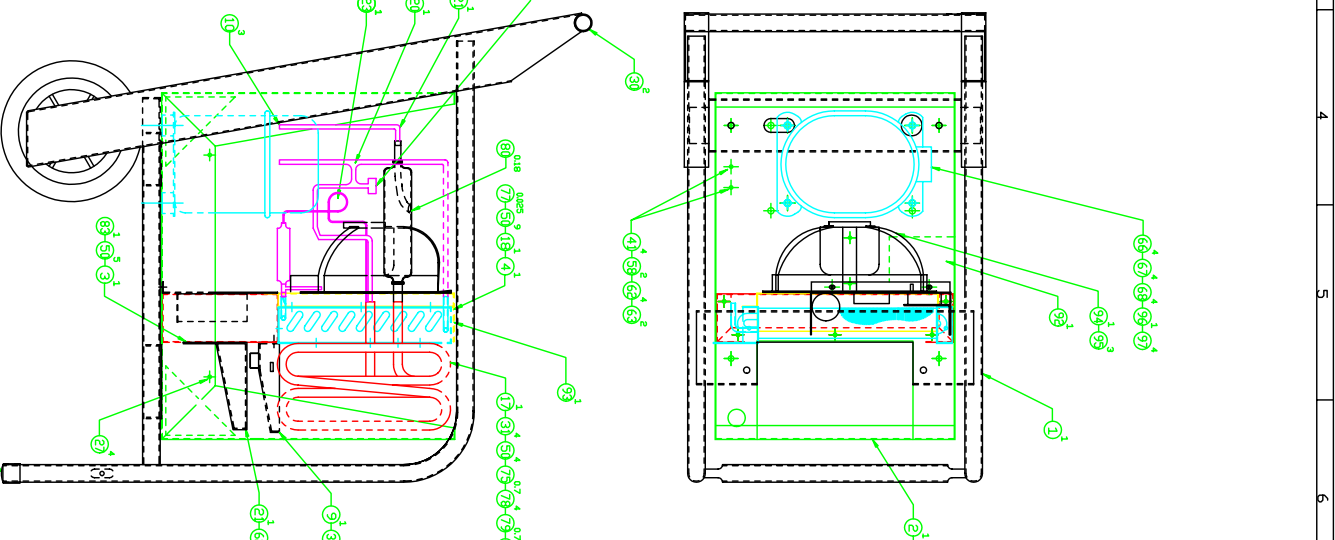
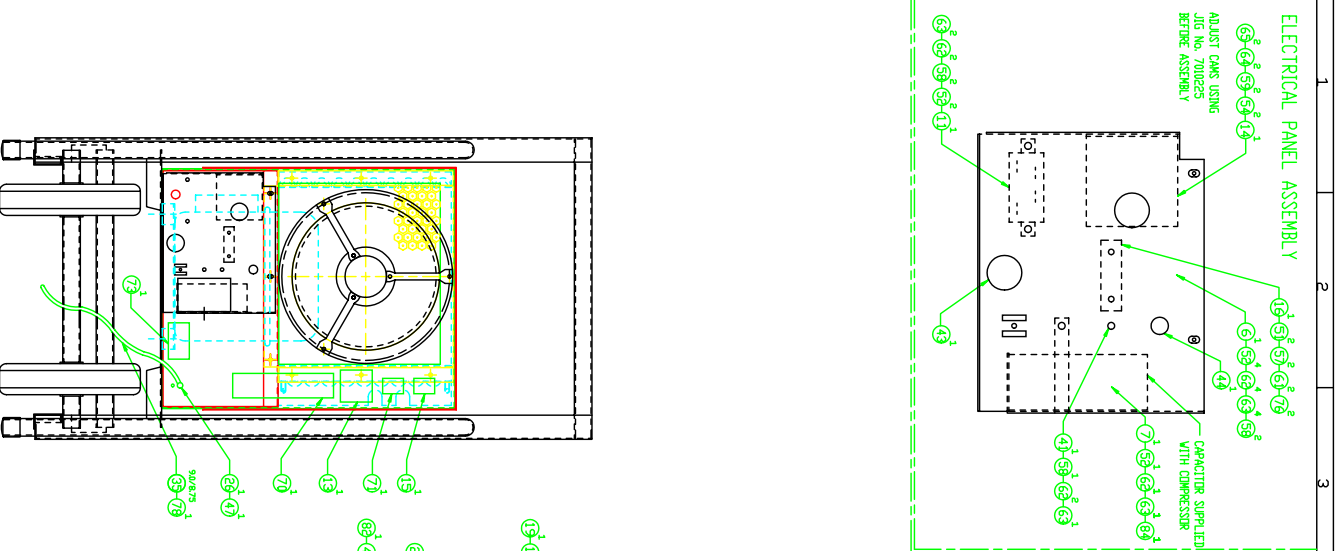
GENERAL ASSEMBLY  
USA - BD 5

DRG.No. 1026400

SCALE 1/4

CHECKED APPROVED

DRYAN AT LABERX SECURITY CLASSIFICATION



ITEM	DESCRIPTION	QTY
92	WARNING LABEL	1
93	WARNING LABEL (RED ON WHITE)	1
94	MOTOR FAN ASSEMBLY	1
95	RVETS	3
96	COMPRESSOR	1
97	M8 X 40 M/S HEX NUT & BOLT	4
500254		
500221		
500221		
6120018		

ITEM	DESCRIPTION	QTY
62	M4 FLAIN ST/ST WASHER	15
63	M4 SPRING ST/ST WASHER	12
64	M4 FLAIN ST/ST WASHER	2
65	M5 SPRING ST/ST WASHER	2
66	M8 X 25 DD M/S FLAT WASHER	4
67	M8 FLAIN WASHER	4
68	M/S SPRING WASHER	4
69	M4 X 12 HEX HEAD	2
70	OPERATING INSTRUCTIONS	1
71	CONTROLS LABEL	1
72	WARNING DIAGRAM LABEL	1
73	RATING LABEL	1
74		1
75	5 X 15 INSUL	1,3
76	M3 SPRING ST/ST WASHER	2
77	FLEXIBLE GROMMET STRIP	0,025
78	CABLE TIES	6
79	3/8" INSUL TUBE	0,7
80	35mm INSUL TUBE	0,18
81	1/2" BLACK TAPE	0,06
82	FILTER BLOWER	1
83	3/8" GROMMET	1
84	CAPACITOR STRAP	1
85	POLYURETHANE BAG	1
86		25
87	4 BOX	0,25
88	PALETTE	0,25
89	15mm GREEN/YELLOW	1,78
90	15mm BLUE	0,97
91	15mm BROWN	1,64

ITEM	DESCRIPTION	QTY
1	FRAME WELD ASSEMBLY	1
2	CHASSIS WARPBOARD	1
3	COIL SUPPORT	1
4	FAN HOUSING	1
5	MACHINE COVER	1
6	ELECTRICAL PANEL	1
7	CAPACITOR STRAP	1
8	FRONT COVER	1
9	HANDICX BRAN TRAY	1
10	CAPS	3
11	RELAY	1
12	SOLENOID COIL	1
13	HOURMETER	1
14	CAM TIMER	1
15	ROCKER SWITCH	1
16	TERMINAL BLOCK	1
17	EVAPORATOR COIL	1
18	CONDENSER COIL	1
19	SOLENOID VALVE	1
20	225mg COPPER COIL (REFRIG) 6mm	0,4
21	PUMP SUPPORT	1
22	SWGAT DN COPPER TEE	2
23	0,047" ID CAPILLARY TUBE	1,22
24	FRIGON 22 REFRIGERANT	0,425
25	WHEEL	2
26	KLAMBOSH	2
27	SPRNG CLIP NUT	6
28	1" STARBUCK FIXING WASHER	2
29	1" STARBUCK FIXING WASHER	2
30	INSERT	2
31	12,7mm P CLIP	4
32	TUBE FURREL	2
33	P.C. TERMINAL	2
34	PANEL EDGE FASTENER	3
35	15mm PVC 3-CORE CABLE	8,5
36	1mm BROWN PVC CABLE	0,94
37	1mm BLUE PVC CABLE	0,73
38	15mm WHITE PVC CABLE	0,5
39		30
40	NATURAL CABLE TIE	8
41	4mm RING TERMINAL	31
42	TERMINAL REEL FDM	1
43	25mm OPEN GROMMET	1
44	25mm OPEN GROMMET	3
45	FASTEN BOOT	33
46	FLAG TERMINAL	2
47	M/S SLOTTED PAN HD SCREW	1
48	POZI PAN HD SELF-TAP SCREW	6
49	M4 WHELD WASHER	6
50	4,8 x 9mm ALUMINIUM RIVET	15
51	M3 X 16 ST/ST SLOTTED PAN HD W/C SCREW	2
52	M4 X 12 ST/ST SLOTTED PAN HD W/C SCREW	7
53	1mm BRNKE PVC CABLE	0,95
54	M5 X 12 ST/ST SLOTTED PAN HD W/C SCREW	2
55	SLIEVE	4
56	M8 X 20 ST/ST HEX HD W/C SCREW	1
57	M3 ST/ST NUT	2
58	M4 ST/ST NUT	7
59	M5 ST/ST NUT	2
60	M8 ST/ST NUT	4
61	M3 FLAIN ST/ST WASHER	2