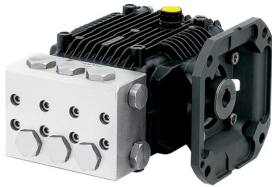


Equipment: Carpet Cleaning Machines > Vacuum Cleaners > HEPA Concrete Dust Slurry Hazmat Vacuums >



Model Number: XMASS35G15E-F33-B

AR Pump XMASS35G15E-F33-B Pump: 3.5/2000 1750RPM Buna

Manufacturer: Annovi Reverberi Pumps

AR Pump XMASS35G15E-F33-B Pump: 3.5/2000 1750RPM Buna

Description

The Annovi Reverberi XMASS35G15E-F33-B, E version 5/8" hollow shaft triplex pump is ready for direct or pulley driving. This pump is manufactured with a brass pump head suitable for a wide range of conditions. The XMASS35G15E-F33-B can produce up to 2000 Max PSI, 3.5 Max GPM, and is designed to operate at 1750 RPM. Constructed with frictionless aluminum connecting rods and ceramic pistons, the XMASS35G15E-F33-B weighs in at 17 lbs and boasts a sleek compact design.

Availability: This product was added to our catalog on Friday 11 October, 2024